

Characteristics

Material

- Sheet steel (EN 10130 DC01)
  - Body : 1.2 mm
  - Cover : 1.2 mm
- Galvanized steel (EN 10346 DX51D+Z)
  - Mounting plate : 1.5 mm

Surface Finishing

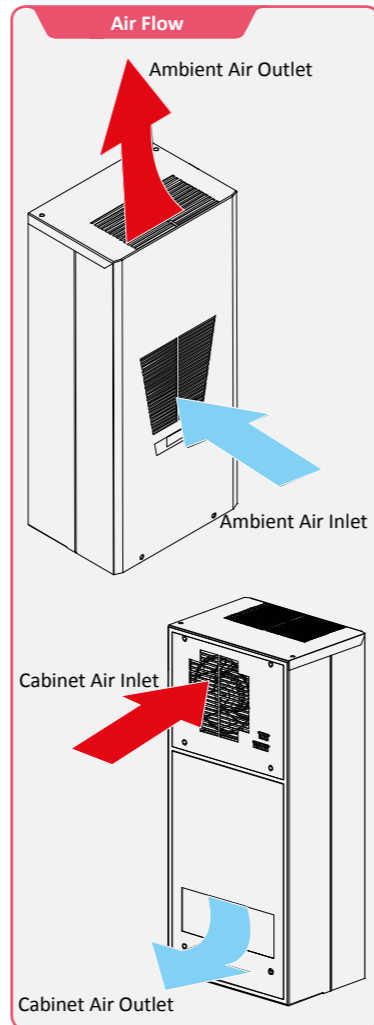
- RAL7035w Powder coating

Protection Degree

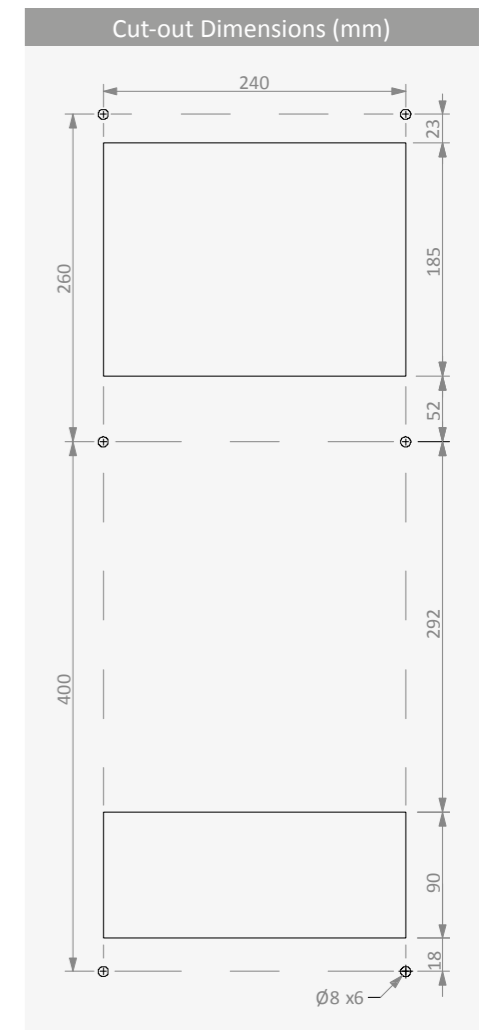
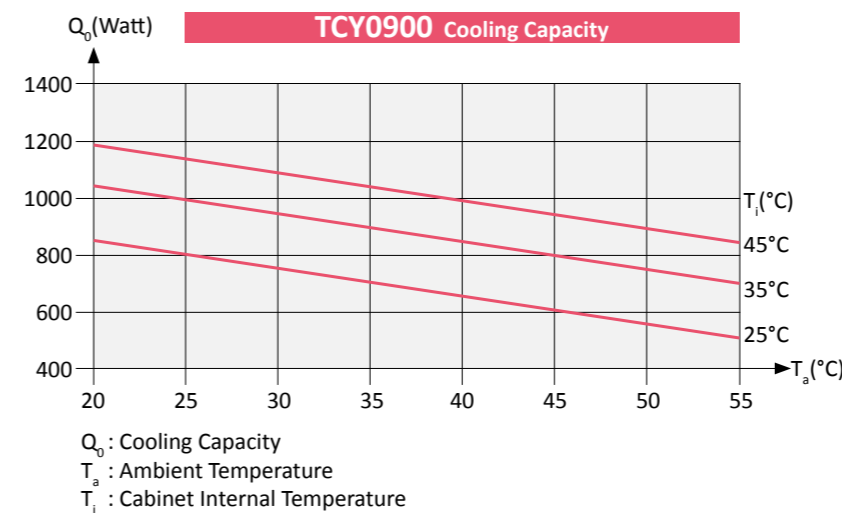
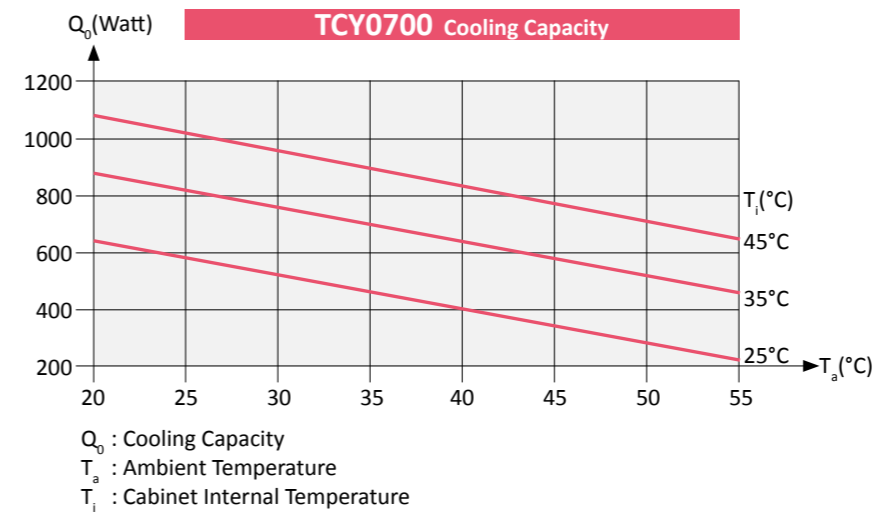
- IP54 (TS 3033, EN 60529)

Others

- Digital control unit
- Programmable door and alarm output contact
- Two different power in same size/cut-out
- Large fin space for minimum dust accumulation
- Fast and easy installation
- Condensate drain output
- Maximum air inlet-outlet distance in cabinet side for optimum cooling performance
- Optional easy fixing ambient side dust filter kit
- Stainless steel versions on request



		TCY0700	TCY0900
Cooling Capacity (EN 14511)	L35 / L35	700 W	900 W
	L35 / L50	520 W	740 W
Voltage - Phase - Frequency		230 V 1~ 50 Hz	
Power Consumption	L35 / L35	390 W	530 W
Maximum Running Current	L35 / L50	2.5 A	3.5 A
Starting Current		17 A	21 A
Unimpeded Air Flow (Internal - External)		650 m³/h - 650 m³/h	
Control Type: Digital, door switch and alarm output			
Cabinet Temperature Limits		20°C - 45°C	
Ambient Temperature Limits		20°C - 55°C	
Refrigerant Type: R 134a			
Refrigerant Amount		240 g	350 g
Dimensions (Width/Height/Depth): 337mm / 742mm / 242mm			
Weight		30 kg	35 kg
Protection Degree (TS 3033, EN 60529)	Cabinet Side	IP 54	
	Ambient Side	IP 34	
Unit Construction		RAL 7035 Electrostatic Powder Coated Sheet Steel (optional Stainless) and Galvanized Sheet Steel	



**Characteristics**

**Material**

- Sheet steel (EN 10130 DC01)
  - Body : 1.2 mm
  - Cover : 1.2 mm
- Galvanized steel (EN 10346 DX51D+Z)
  - Mounting plate : 1.5 mm

**Surface Finishing**

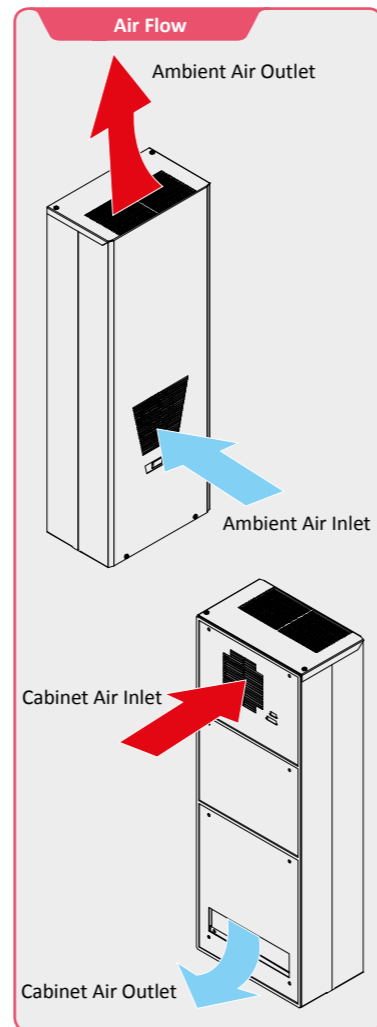
- RAL7035w Powder coating

**Protection Degree**

- IP54 (TS 3033, EN 60529)

**Others**

- Digital control unit
- Programmable door and alarm output contact
- Two different power in same size/cut-out
- Large fin space for minimum dust accumulation
- Fast and easy installation
- Condensate drain output
- Maximum air inlet-outlet distance in cabinet side for optimum cooling performance
- Optional easy fixing ambient side dust filter kit
- Stainless steel versions on request



		TCY1500	TCY2000
Cooling Capacity (EN 14511)	L35 / L35	1500 W	2000 W
	L35 / L50	1200 W	1550 W
Voltage - Phase - Frequency		230 V 1~ 50 Hz	
Power Consumption	L35 / L35	860 W	1070 W
Maximum Running Current	L35 / L50	5.7 A	6.5 A
Starting Current		22 A	22 A
Unimpeded Air Flow (Internal - External)		850 m³/h - 850 m³/h	850 m³/h - 1200 m³/h
Control Type		Digital , door switch and alarm output	
Cabinet Temperature Limits		20°C - 45°C	
Ambient Temperature Limits		20°C - 55°C	
Refrigerant Type		R 134a	
Refrigerant Amount		400 g	600 g
Dimensions (Width/Height/Depth)		436mm / 1200mm / 266mm	
Weight		51 kg	59 kg
Protection Degree (TS 3033, EN 60529)	Cabinet Side	IP 54	
	Ambient Side	IP 34	
Unit Construction		RAL 7035 Electrostatic Powder Coated Sheet Steel (optional Stainless) and Galvanized Sheet Steel	

