

Characteristics

- Material**
 Sheet Steel (EN 10130 DC01)
 ■ Body : 1.2 mm
 ■ Door : 1.2 mm
- Surface Finishing**
 ■ RAL7035w powder coating
- IP Rating**
 ■ IP55 (TS 3033, EN 60529)
- Others**
 ■ Fully welded construction
 ■ Glazed door fixed with two screws
 ■ Foamed-in door PU sealing gasket
 ■ 155° concealed hinges
 ■ Top and bottom gland plates
 ■ One piece PE gasket for gland plate
 ■ Ready for DIN rail fixing



On Request

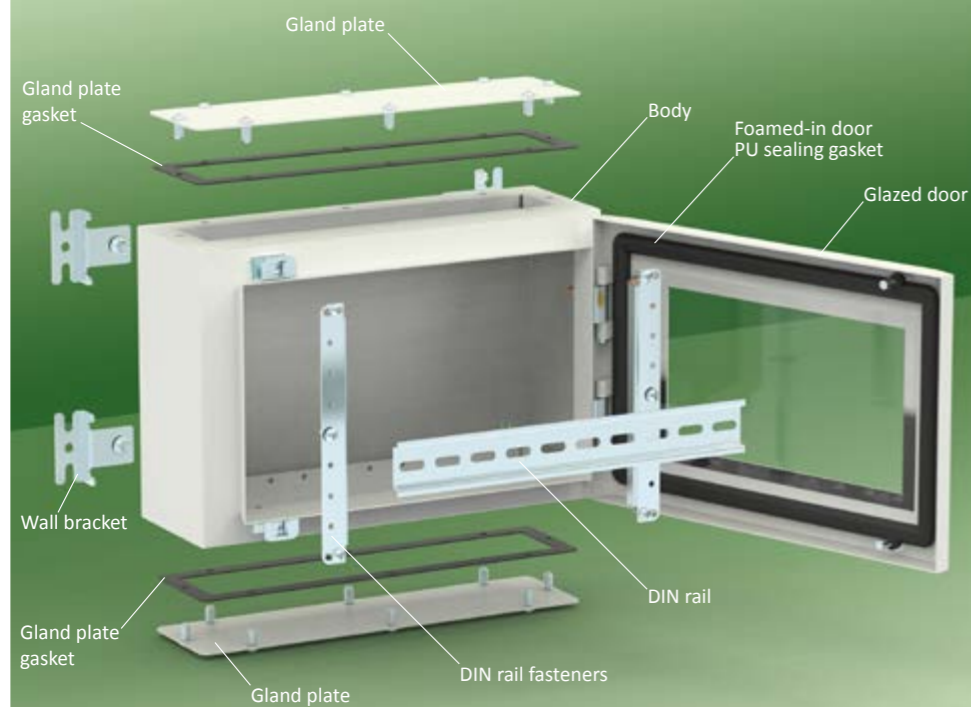
- Special sizes
- Solid door
- Special colour
- Special mounting plate
- Pre-punching

Supply Includes

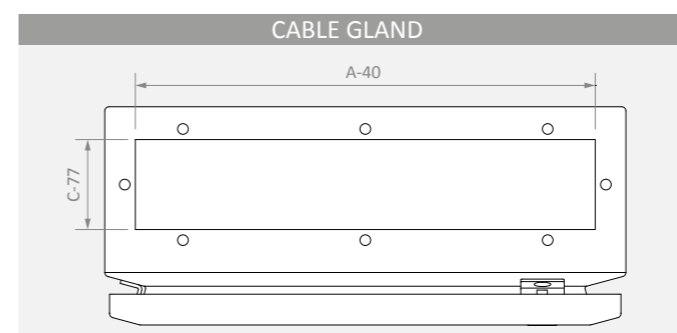
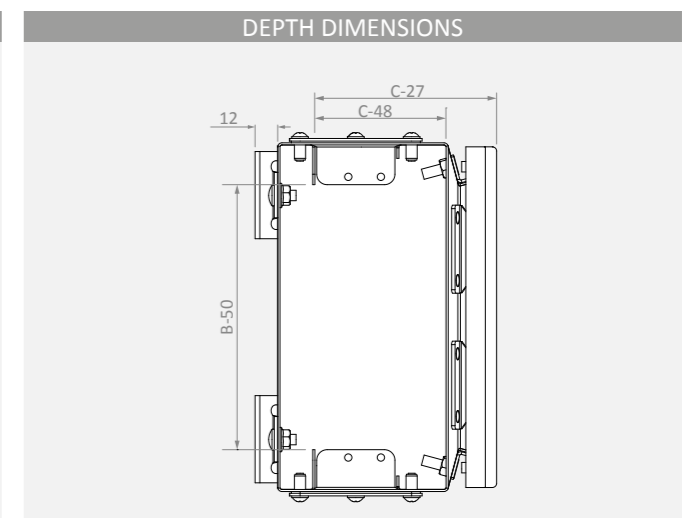
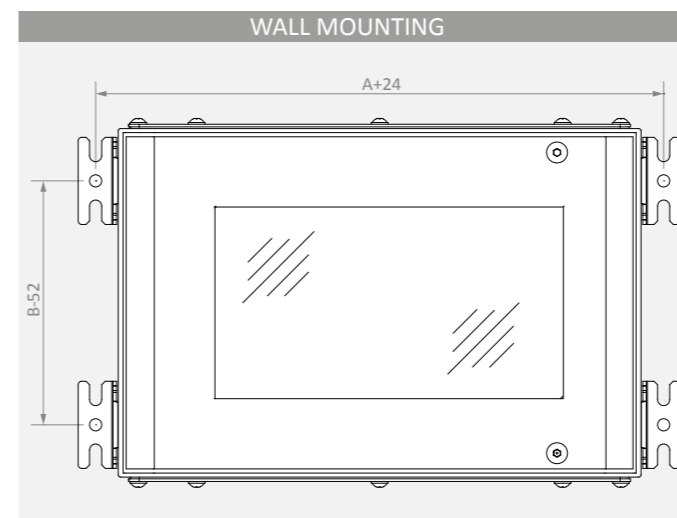
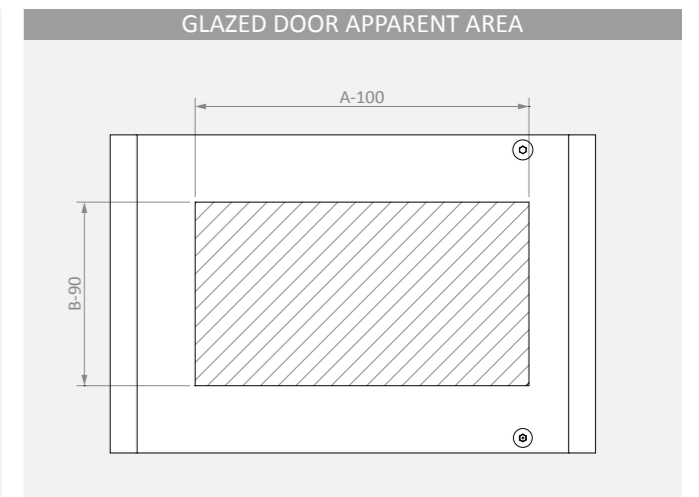
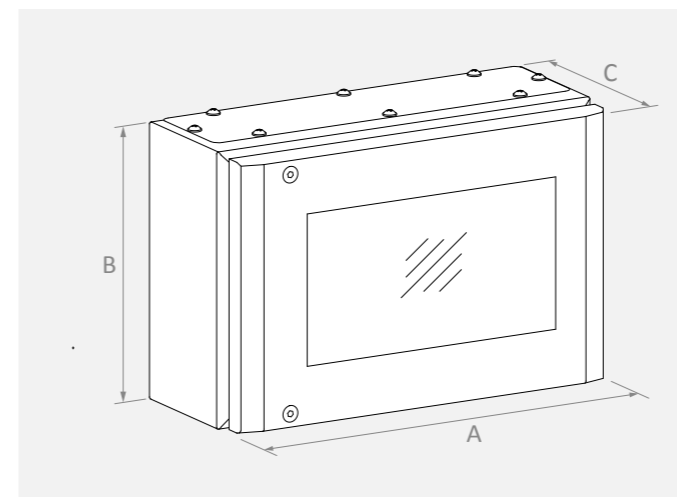
- Body
- Glazed door
- 2 pcs DIN rail fasteners
- 2 pcs gland plates with gasket

Complementary Accessories

- DIN rail
- Earthing cable
- 4 pcs wall brackets



Width A	Height B	Depth C	Reference	Useful Area Side		Apparent Area		Cable Gland			Wall Mounting		DIN Rail Fixing	Weight kg
				↕ mm	↗ mm	↔ mm	↕ mm	# ad	↔ mm	↗ mm	↔ mm	↕ mm	↔ mm	
300	200	125	TB 302012	150	77	200	110	2	260	48	324	148	225	3.6
	300	125	TB 303012	250	77	200	210	2	260	48	324	248	2 x 225	4.6
400	200	125	TB 402012	150	77	300	110	2	360	48	424	148	325	4.5
	300	150	TB 403015	250	102	300	210	2	360	73	424	248	2 x 325	6.0
	400	150	TB 404015	350	102	300	310	2	360	73	424	348	2 x 325	7.5

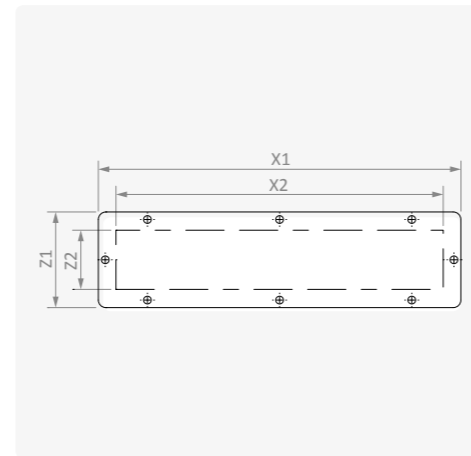
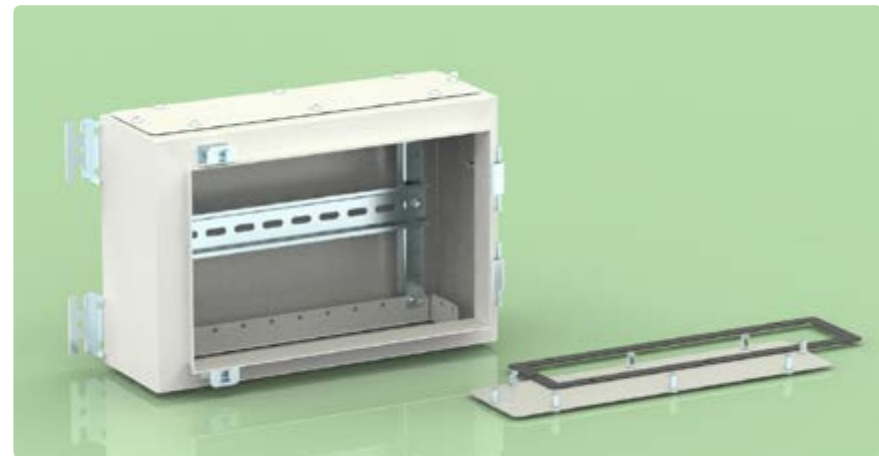


CABLE GLAND PLATE

Reference	Width		Depth		External Dimensions		Useful Area		Weight kg
	A mm	C mm	X1 mm	Z1 mm	X2 mm	Z2 mm	X2 mm	Z2 mm	
TB GP 30 12	300	125	228	76	260	48	260	48	0.25
TB GP 40 12	400	125	388	76	360	48	360	48	0.35
TB GP 40 15	400	150	388	101	360	73	360	73	0.47

Characteristics	
Material	DIN EN 10130 DC01 CCRS
Surface Finishing	RAL7035w powder coating
Thickness	1.5 mm

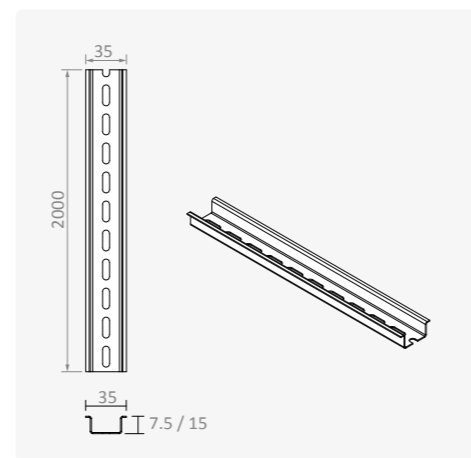
Supply Includes	
One pece PE Gasket	
Mounting fasteners	



DIN RAILS

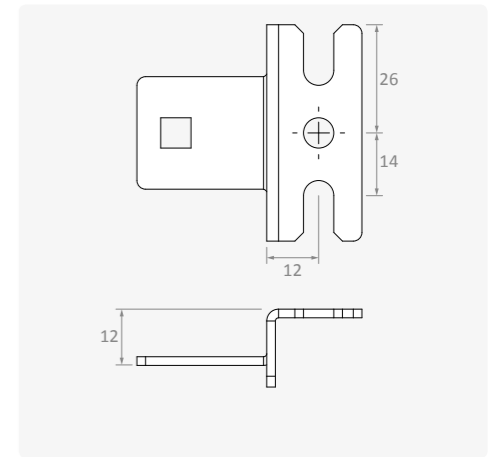
Reference	Width mm	Height mm	Hole Yes/No	Length m	Weight kg/pcs
MR KL 500603	35	7.5	No	2	0.7
MR KL 500604	35	7.5	Yes	2	0.7
MR KL 500609	35	15	Yes	2	1.2

Characteristics	
Material	DIN EN 10130 DC01 CCRS
Surface Finishing	Zinc coated Cr ³ passivation
Standards	DIN EN 60715



WALL BRACKETS

Reference	Packet	Weight	Characteristics		Supply Includes
	pcs/packet	kg/packet	Material	DIN EN 10130 DC01 CCRS	Wall mounting screws
AK KL 0010	4	0.16	Surface Finishing	Zinc coated Cr ³ passivation	
			Thickness	2 mm	



LID MOUNTING FASTENERS

Reference	Packet	Weight	Supply Includes	
	pcs/packet	kg/packet	50 pcs M6 x 20 Imbus screw	50 pcs M6 plastic retaining washer
AK AK TB 062010	50	0.53	50 pcs M6 cage nut	



EARTHING CABLE

Reference	Material	Cross-Section	Length	Connection	Packet	Weight
		mm ²	mm		pcs/packet	kg/packet
KB OZ 061908080	Yellow - Green, Isolated copper conductor	6	190	M8-M8	10	0.16

